

# SYSTIMAX®

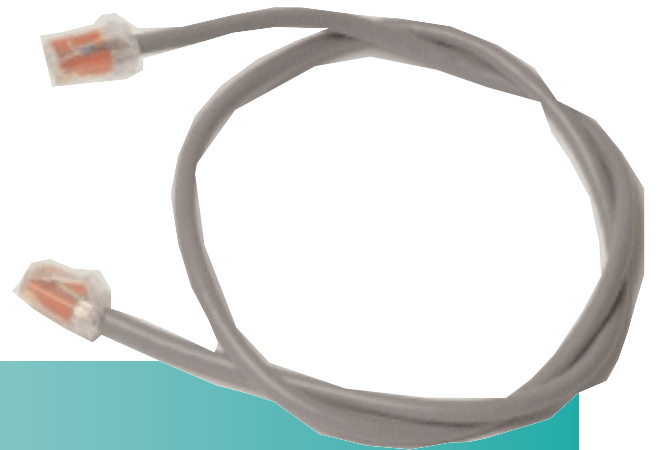
---

## SOLUTIONS

### SYSTIMAX® GS8E GigaSPEED® XL Modular Patch Cord

**Designed by SYSTIMAX® Labs to provide reliable high–performance connectivity**

The SYSTIMAX® GS8E modular patch cord family supports the high performance system level requirements built into the new GigaSPEED XL cabling solutions. The GS8E family of modular patch cords is available in a wide range of cord types, lengths, colors, and configurations. Our new feature configuration ordering process provides the ultimate in flexibility to meet any cabling infrastructure design.



#### Features and Benefits

- Electrical performance guaranteed to meet or exceed TIA/EIA 568-B.2-1 Category 6 and ISO/IEC Category 6/Class E specifications.
- Patented plug design, improved 24-gauge cordage and a unique manufacturing process assures extremely high electrical performance with low variability.
- Improved anti-snag feature provides maximum protection from snagging during moves and rearrangements.
- Available in 10 colors, stranded or solid conductors, and all lengths from 1 to 100 feet (1 to 30 meters) utilizing our new feature configuration ordering process which improves delivery and provides maximum flexibility in customizing cords to target specific needs.
- UL listed, UL-C certified and ACA approved.
- Can support network line speeds in excess of 1 gigabit per second.
- Certified component of an integrated GigaSPEED XL Solution.
- Qualifies for a 20-year product and applications assurance warranty when included in a certified SYSTIMAX GigaSPEED XL channel.

**SYSTIMAX® Structured Connectivity Solutions**

## Performance Specifications

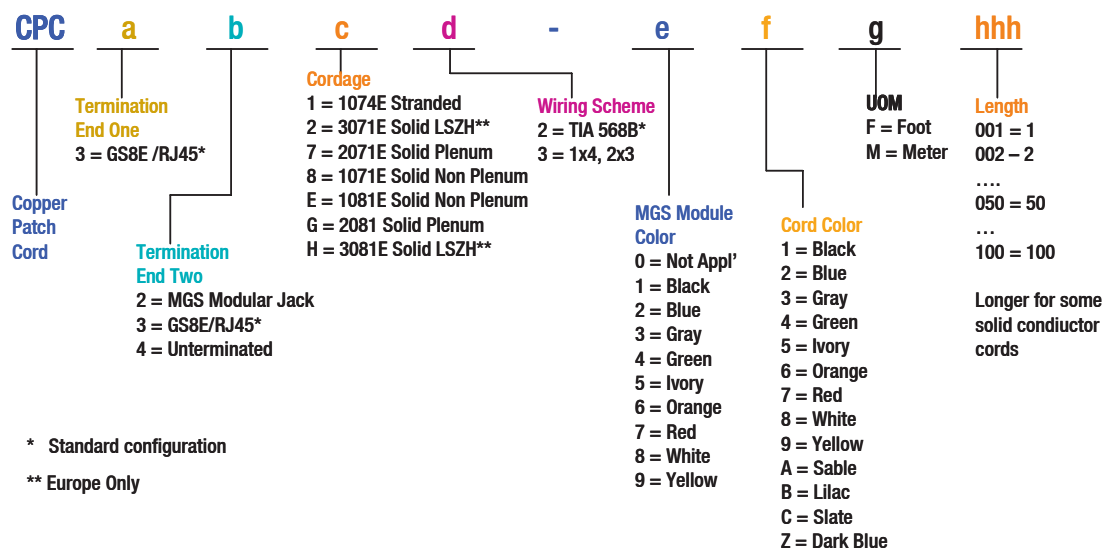
	GS8E Patch Cord	XL7 Solution	XL8 Solution
		GigaSPEED Channel (4 Connectors)	
	Typical Worst Pair Margin*	Guaranteed Margin **	Guaranteed Margin **
Insertion Loss	n/a	5.0%	7.5%
NEXT	4.4 dB	6.0 dB	7.0 dB
PSNEXT	n/a	7.5 dB	8.5 dB
ELFEXT	n/a	6.0 dB	8.0 dB
PSELFEXT	n/a	8.0 dB	10.0 dB
Return Loss	5.9 dB	4.0 dB	4.0 dB
Frequency Range	1 - 250 MHz	1 - 250 MHz	1 - 250 MHz

\* Typical worst pair swept margin to TIA Patch Cord specification when measured with MGS400 information outlet.

\*\*Guaranteed margin is valid at any frequency from 1 - 250 MHz for a SYSTIMAX certified channel comprising GigaSPEED XL apparatus and 71E series cable (GigaSPEED XL7 Solution) or 81A series cable (GigaSPEED XL8 Solution). Values represent margin over the draft Category 6 / Class E channel specifications.

## Ordering Information

Patch cords are orderable using a 14-character feature configuration coding scheme which replaces the familiar 9-character Material ID. This allows maximum flexibility for ordering many different combinations of plug ends, cordage types, colors and lengths. Contact your SYSTIMAX distributor for additional ordering information.



The most popular GS8E Cord Family Identifiers:  
(Simply add cordage color and length identifiers to the family code)

<b>Ordering Information Continued</b>	
<b>Material ID</b>	<b>Description</b>
CPC3312-0fghhh	GS8E Double Ended With Stranded Non-Plenum Cordage
CPC3382-0fghhh	GS8E Double Ended With Solid Conductor Non-Plenum Cordage
CPC3372-0fghhh	GS8E Double Ended With Solid Conductor Plenum Cordage
CPC3322-0fghhh	GS8E Double Ended With Solid Conductor LSZH Cordage
CPC3412-0fghhh	GS8E Single Ended With Stranded Non-Plenum Cordage
CPC3482-0fghhh	GS8E Single Ended With Solid Conductor Non-Plenum Cordage
CPC3472-0fghhh	GS8E Single Ended With Solid Conductor Plenum Cordage
CPC3422-0fghhh	GS8E Single Ended With Solid Conductor LSZH Cordage
CPC3313-0fghhh	GS8E Cross-Over Double Ended With Stranded Non-Plenum Cordage
CPC3282-efghhh	GS8E Pre-terminated with MGS400 Outlet with Solid Conductor Non-Plenum Cordage
CPC3272-efghhh	GS8E Pre-terminated with MGS400 Outlet with Solid Conductor Plenum Cordage

# SYSTIMAX<sup>®</sup>

---

## SOLUTIONS

© 2004 CommScope, Inc.  
All rights reserved.

Visit our Web site at [www.systimax.com](http://www.systimax.com) or contact your local SYSTIMAX Solutions representative or SYSTIMAX BusinessPartner for more information.  
SYSTIMAX Solutions is a trademark of CommScope. All trademarks identified by © or ™ are registered trademarks or trademarks, respectively, of CommScope.

This document is for planning purposes only and is not intended to modify or supplement any specifications or warranties relating to SYSTIMAX Solutions products or services.

[www.systimax.com](http://www.systimax.com)